



JANUARY 2005

DiAcro[®]
Replacement Clamp Assemblies

TABLE OF CONTENTS



VT-36	1-2
OCT-20 - CAP 1000	3-4
3620	5-6

Local
Tel: 651-286-6001
Fax: 651-286-5959

Toll Free U.S.A. & Canada
Tel: 800-328-9646
Fax: 800-222-0002

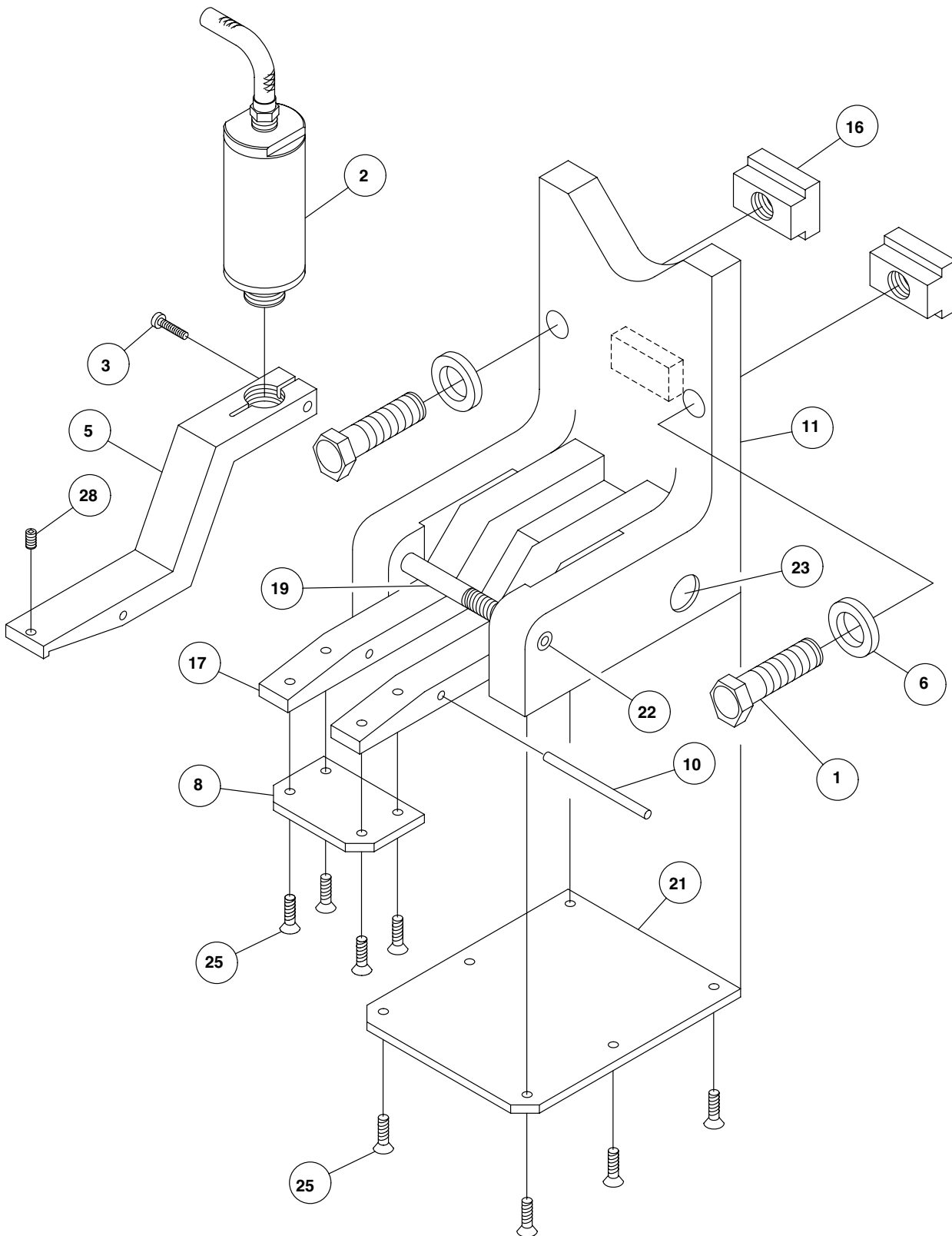
Toll Free Mexico
Tel: 001-800-741-2510
Fax: 001-800-544-2096

Website & Email
www.wilsontool.com
salesdesk@wilsontool.com



COMPONENT PARTS

VT36



COMPONENT PARTS

VT36



DWG. NO.	DESCRIPTION	CAT. NO.	PRICE
0	Complete Assembly	32855	
0	Jaw Pack (Incl. #5, #8, #10, #17)	32858	
1	Screw, AH Pkg of 10	33329	
2	Air Cylinder	32856	
3	Screw, AH Pkg of 10	33316	
4	Air Hose Assembly	33045	
5	Clamp (Upper Jaw)	32861	
6	Washer Steel Hardened	33354	
8	Clamp Plate (Lower Jaw)	32859	
10	Dowel Pin	32903	
11	Holder Mount	32904	
16	Tee Nut	33006	
17	Body (Pivot Arm)	32860	
19	Socket Head Cap Screw (1/4-20 x 2-3/4)	33323	
21	Actuator Plate	32857	
22	Socket Set Screw (1/4-20 x 1/4)	33350	
23	Dowel Pin (3/8 x 1-3/4) 2 Req	33302	
25	Screw FH, Pkg of 10	33335	
28	Screw SS, Pkg of 10	33347	

Local
Tel: 651-286-6001
Fax: 651-286-5959

Toll Free U.S.A. & Canada
Tel: 800-328-9646
Fax: 800-222-0002

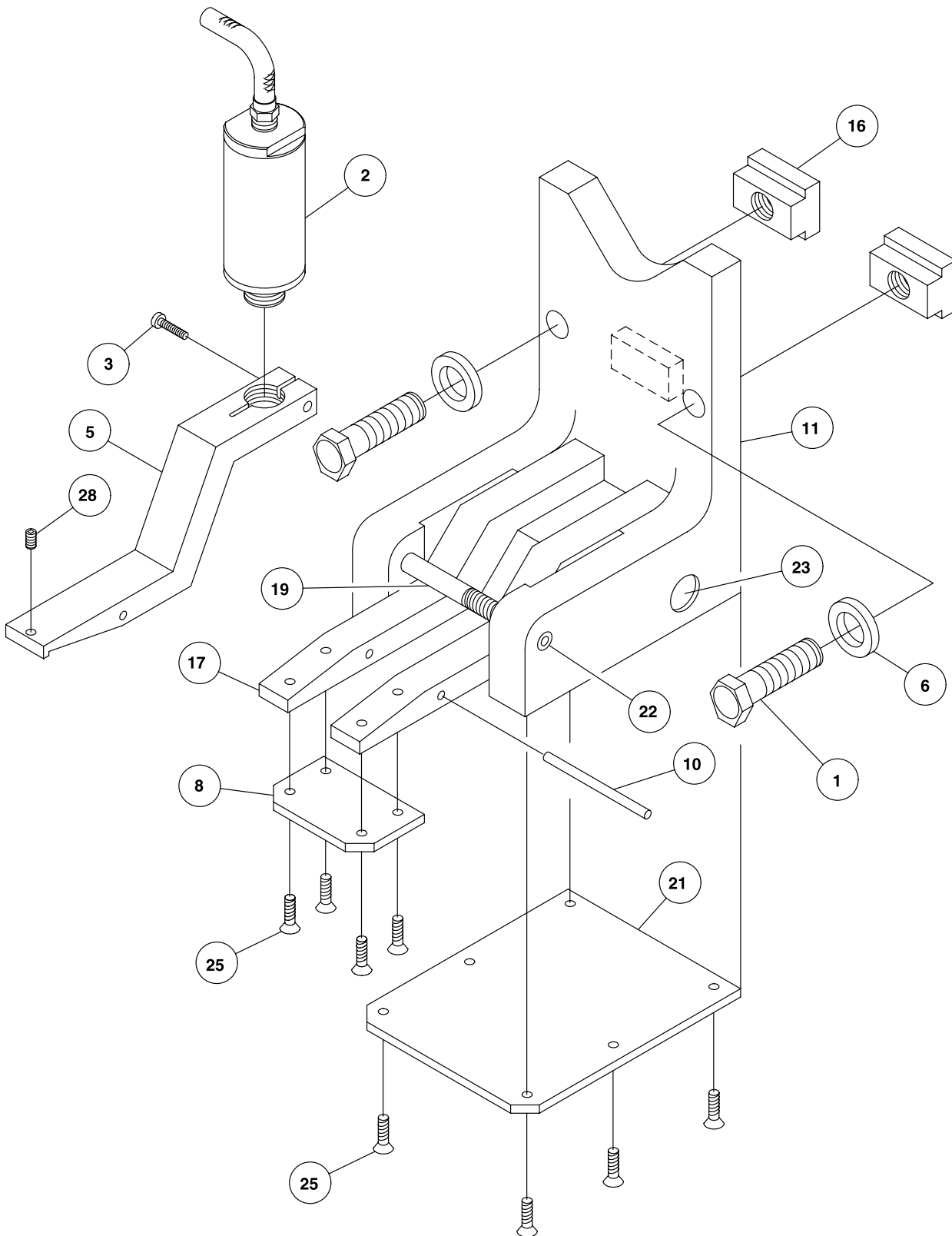
Toll Free Mexico
Tel: 001-800-741-2510
Fax: 001-800-544-2096

Website & Email
www.wilsontool.com
salesdesk@wilsontool.com



COMPONENT PARTS

QCT-20, CAP 1000



COMPONENT PARTS

QCT-20, CAP 1000



DWG. NO.	DESCRIPTION	CAT. NO.	PRICE
0	Complete Assembly	32900	
0	Jaw Pack (Incl. #05, #08, #10, #17)	32909	
1	Screw AH, Pkg of 10	33329	
2	Air Cylinder	32902	
4	Air Hose Assembly	33045	
5	Clamp (Upper Jaw)	32912	
6	Washer Steel Hardened	33354	
8	Clamp Plate (Lower Jaw)	32910	
10	Dowel Pin	32903	
11	Holder Mount	32904	
16	Tee Nut	33006	
17	Body (Pivot Arm)	32911	
19	Socket Head Cap Screw (1/4-20 x 2-3/4)	33323	
21	Actuator Plate	32906	
22	Socket Set Screw (1/4-20 x 1/4)	33350	
23	Dowel Pin (3/8 x 1-3/4) (Two Needed)	33302	
25	Screw FH, Pkg of 10	33335	
28	Screw SS, Pkg of 10	33347	
99	Urethane Boot	33355	

Local
Tel: 651-286-6001
Fax: 651-286-5959

Toll Free U.S.A. & Canada
Tel: 800-328-9646
Fax: 800-222-0002

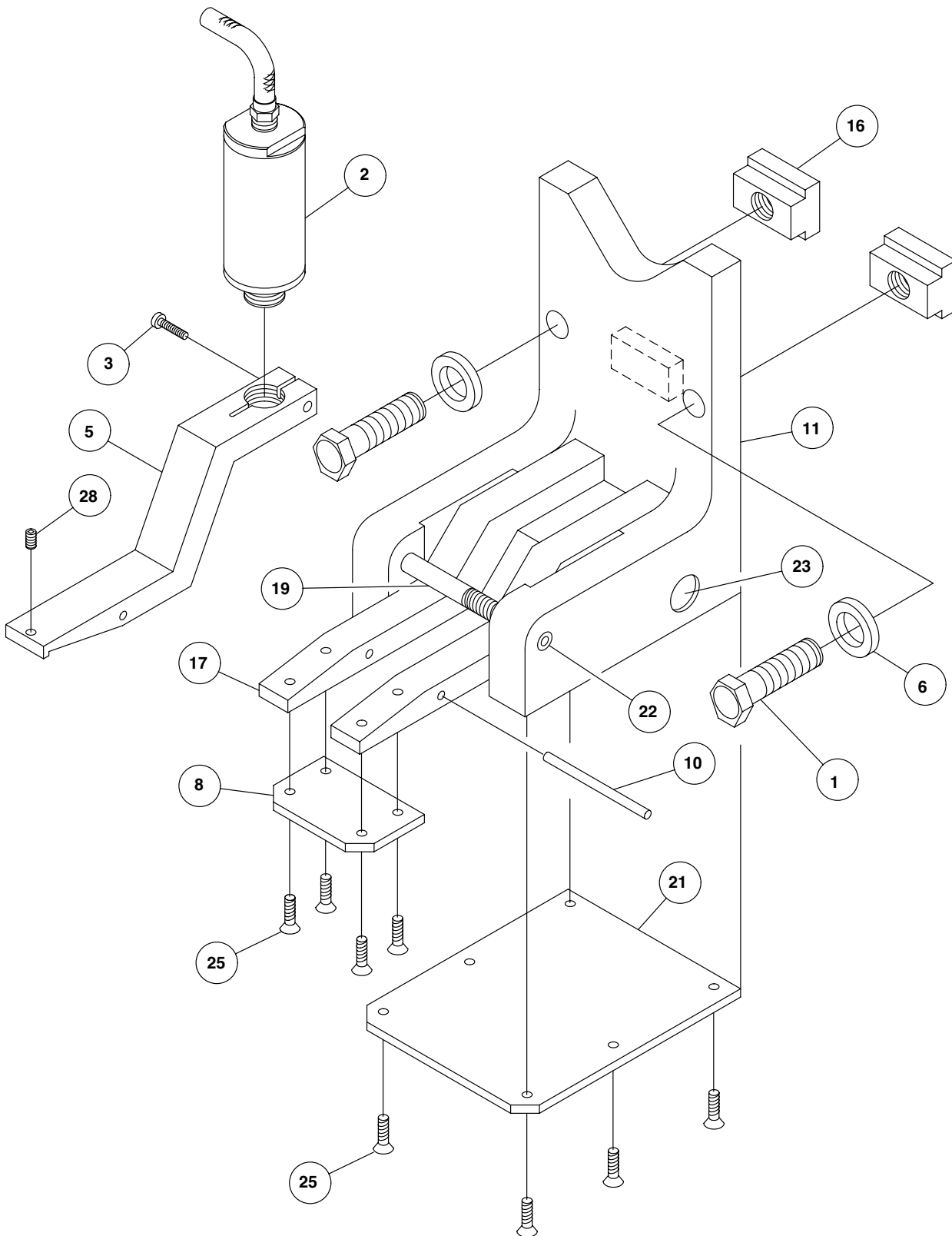
Toll Free Mexico
Tel: 001-800-741-2510
Fax: 001-800-544-2096

Website & Email
www.wilsontool.com
salesdesk@wilsontool.com



COMPONENT PARTS

3620



COMPONENT PARTS

3620



DWG. NO.	DESCRIPTION	CAT. NO.	PRICE
0	Complete Assembly	33005	
0	Jaw Pack (Incl. #05, #08, #10, #17)	33007	
1	Screw, AH Pkg of 10	33329	
2	Air Cylinder	32856	
3	Screw, AH Pkg of 10	33316	
4	Air Hose Assembly	33045	
5	Clamp (Upper Jaw)	32861	
6	Washer Steel Hardened	33354	
8	Clamp Plate (Lower Jaw)	32910	
10	Dowel Pin	32903	
11	Holder Mount	32904	
16	Tee Nut	33006	
17	Pivot Arm	33008	
19	Socket Head Cap Screw (1/4-20 x 2-3/4)	33323	
21	Actuator Plate	32906	
22	Socket Set Screw (1/4-20 x 1/4)	33350	
23	Dowel Pin (3/8 x 1-3/4) (Two Needed)	33302	
25	Screw FH, Pkg of 10	33335	
28	Screw SS, Pkg of 10	33347	

Local
Tel: 651-286-6001
Fax: 651-286-5959

Toll Free U.S.A. & Canada
Tel: 800-328-9646
Fax: 800-222-0002

Toll Free Mexico
Tel: 001-800-741-2510
Fax: 001-800-544-2096

Website & Email
www.wilsontool.com
salesdesk@wilsontool.com



Visit us at www.wilsontool.com

“Our goal is to deliver the most reliable, innovative, durable, and consistent tools, such that our customers can be the most successful fabricators in the world.”

Toll Free Order Desk

U.S. & CANADA
tel 1-800-328-9646
fax 1-800-222-0002

MEXICO
tel 001-800-741-2510
fax 001-800-544-2096

BELGIUM
tel 0032-14257474
fax 0032-14257475

DENMARK
tel 80 20 20 24
fax 80 20 20 26

IRISH REPUBLIC
tel 1-800-709009
fax 1-800-535538

NORWAY
tel 800 10809
fax 800 10803

SWEDEN
tel 020 79 14 19
fax 020 79 14 18

FINLAND
tel 09-3512569
fax 09-3513769

or
tel 06-4764300
fax 06-4764301

FRANCE,
SWITZERLAND
tel 0800-90-8488
fax 0800-90-8520

GERMANY, AUSTRIA,
SWITZERLAND,
THE NETHERLANDS
tel 00800-9457668665
fax 00800-945766329

The Di-Acro name and its product names are registered trademarks of Di-Acro Hand & Power equipment and are not affiliated with Wilson Tool International, Inc.



Xtra Tooling Division
12912 Farnham Avenue
White Bear Lake, MN 55110

Tel (Free): 800-328-9646
Fax (Free): 800-222-0002
Email: salesdesk@wilsontool.com

WILSON TOOL INTERNATIONAL

Wilson Tool International, Inc. United States

12912 Farnham Avenue
White Bear Lake, MN 55110 USA
Tel (Free): 800-328-9646
Tel: 651-286-6001
Fax (Free): 800-222-0002
Fax: 651-286-5959
Email: marketing@wilsontool.com

Wilson Tool International, Ltd. United Kingdom

Stirling Road, South Marston
Industrial Estate, Swindon,
Wiltshire, SN3 4TQ England
Tel (Free): 0800-373748
Tel: +44 1793 831818
Fax (Free): 0800-373758
Fax: +44 1793 831945 or 46
Email: sales@wilsontool.co.uk

Wilson Tool International China LLC

Rm 2F/C No.1076 Jiangning Road
Shanghai 200060 China
Tel: +86 21 62660958
+86 21 62662396
Fax: +86 21 62662364
Email: ldtool@guomai.sh.cn

Wilson Tool International Germany

Gottlieb Daimler Str 2
31552 Rodenberg, Germany
Tel (Free): 00800-9457668665
Tel: +49 5723 747 0
Fax (Free): 00800-945766329
Fax: +49 5723 747 10
Email: verkauf@wilsontool.eu.com

Wilson Tool International A/S Denmark

Islevdavej 100
DK-2610
Roedovre, Denmark
Tel (Free): +80 20 20 24
Tel: +45 44 53 1699
Fax (Free): +80 20 20 26
Fax: +45 44 53 0607
Email: sales@wilsontool.dk